



Engine

# Inspection Report

Sheet:

Name of Vessel:	Engine type: RT96C-B	Engine running hrs.:	Hull no.:	Class
Nom. power [bhp x rpm]:	Date of Report: 07 Jul. 2005	Prepared by: Yeongki Yeo	Witness by:	

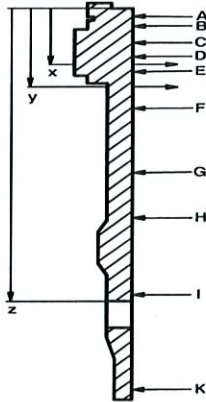
Serial No  
36206 KOB.  
W.T.P 7 BAR  
03. GL 05.  
T - 852  
HSD. 20 - 001000.  
04.03.2005



### Roughness after honing ( $\mu m$ )

Distance from top	F-A	P-S
310	0.64	0.67
1308	0.67	0.67
2020	0.66	0.69

### Cylinder liner measurement



	Distance from top	Initial		Distance from top	Before Honing		After Honing	
		F / A	P / S		F / A	P / S	F / A	P / S
A	85			190	35	33	38	36
B	266	8.5	8.5	240	33	28	33	31
C	328	8.5	8.5	310	33	28	35	32
D	396	8.5	8.5	388	35	27	36	34
E	479	8.5	8.5	720	31	26	31	29
F	740	7.5	7.5	958	25	26	27	28
G	1283	6.5	7.5	1308	24	26	27	27
H	1815	7.5	7.5	1662	24	27	27	27
I	2235	7	6	2020	24	26	26	26
K	2958	5	6	2320	26	27	27	27
L				3200	22	21	22	21
Liner Wall Temperature		16.3 °C			24 °C		22 °C	

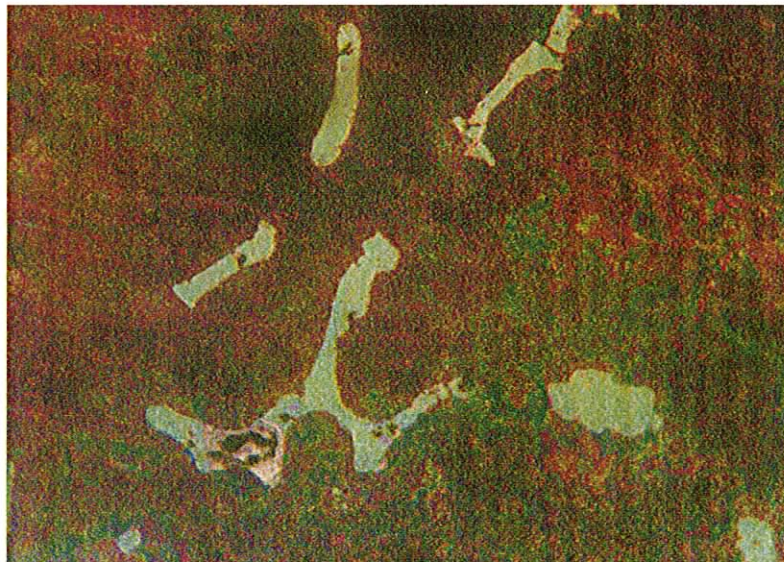
### Photos



Before Honing



After Honing



After Honing